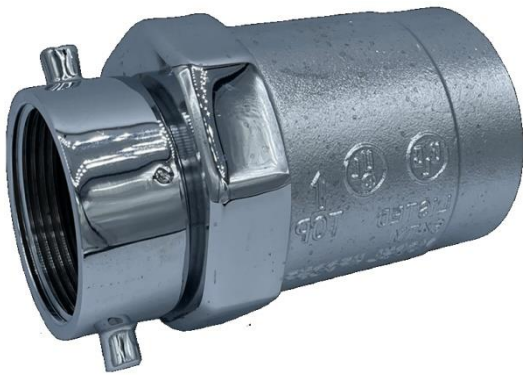


**[HF325F CP]**  
**POLISHED CHROME PLATED CHECK SNOOT (CLAPPER STYLE)**  
**3" FNPT X 2-1/2" HOSE SWIVEL**



**INFORMATION:**

3" (76mm) Female NPT x 2.5" (64mm) Female swivel hose thread, polished brass Check Snoot. The HF325F CP is used on multiple inlet fire department connections, enabling the connection of several fire department supply lines at one time. The HF325F CP is equipped with a brass clapper preventing the backflow of water through unused connections. A breakable cap or plug should be installed to protect the swivels and reduce the risk of foreign debris from entering the connection.

UL/ULC and FM approved; rated for 300 psi (2070 kPa).

**FINISH:** Polished Chrome

**OPTIONAL FINISH:** Polished Brass

**Hose Threads Available:** NST

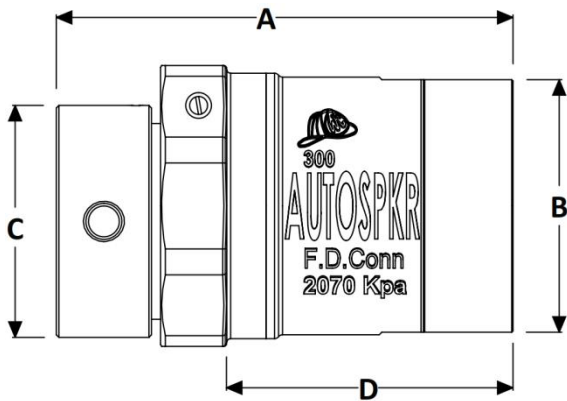
**Other Hose Threads:** Please Contact

**LISTED:**



**DIMENSIONS:**

Dimension	Inch	mm
A	7	178
B	3" FEMALE NPT	
B (OD)	3-7/8	98
C	2-1/2" HOSE THREAD	
D	4-3/8	111



PROJECT	APPROVAL STAMP
PROJECT:	<input type="checkbox"/> APPROVED
ADDRESS:	<input type="checkbox"/> APPROVED AS NOTED
ENGINEER:	<input type="checkbox"/> NOT APPROVED
SUBMITTAL DATA:	REMARKS:
NOTES 1:	
NOTES 2:	