

[IE284AC PACK

4.0" GROOVE x (2) 2.5" NPT - Angled Recessed Chrome FDC Package w. Double Drop Clappers



INFORMATION:

4" (100mm) GROOVE x 2.5" (65mm) NPT x 2.5" (65mm) NPT cast brass recessed angle body (UL / ULC Listed and FM Approved) fire department connection with brass, chrome finish accessories.

The IE28 body is a double drop clapper Siamese and is used as an auxiliary connection and allows up to 500 GPM to supplement the system water supply for fire protection.

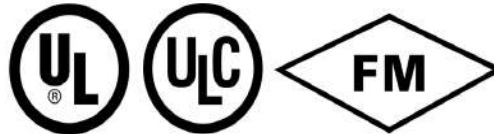
The body of the Siamese with its independent self-closing clapper valves can be placed inside the building or if space prevents, can be built into the wall of the building during construction.

The package also comes with double female HF58BR snoots with rigid end NPT x rocker or pin lug hose thread swivels, pin or rocker lug plugs with chains and polish chrome escutcheon plate.

Specify regional hose thread and lettering for signage.

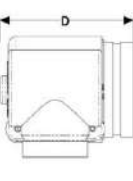
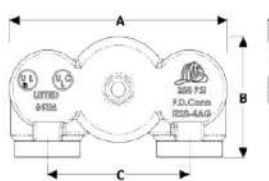
FINISH: Chrome
OPTIONS: Brass

HOSE THREADS AVAILABLE: CSA, BCT, WCT, QST, NSST, NPSH, NST, Louisville, Cleveland, Chicago, Pittsburgh, New Cincinnati, New York Corp., New York Fire Department, Richmond and Raleigh. Other threads see factory for availability.

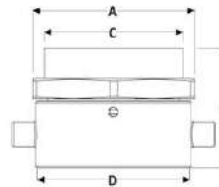


DIMENSIONS:

TOP OR BOTTOM OUTLET (ANGLE BODY)



BODY		
DIMENSION	INCH	MM
A	10 3/4	273
B	5 3/4	146
C	7	178
D	6 9/16	167



SNOOT & SWIVEL		
DIMENSION	INCH	MM
A	3 21/32	93
B	2 5/8	67
C	3 5/32	80
D	2.5" HOSE THREAD	

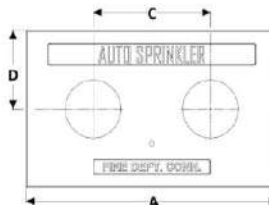
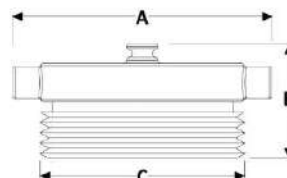


PLATE		
DIMENSION	INCH	MM
A	15	381
B	9	229
C	7	178
D	4 1/2	114



PLUG		
DIMENSION	INCH	MM
A	4 1/8	105
B	1 3/4	45
C	2.5" HOSE THREAD	

PROJECT	APPROVAL STAMP
PROJECT:	<input type="checkbox"/> APPROVED
ADDRESS:	<input type="checkbox"/> APPROVED AS NOTED
ENGINEER:	<input type="checkbox"/> NOT APPROVED
SUBMITTAL DATA:	REMARKS:
NOTES 1:	
NOTES 2:	