

**[ IE33S PAC BRASS ]**

**4"x2.5"X2.5" Brass straight body exposed fire department connection with brass accessories**



4" (100mm) NPT x 2.5" (65mm) hose thread x 2.5" (65mm) hose thread cast brass straight body exposed fire department connection with brass accessories. The IE33S is a UL / ULC Listed and FM Approved swing clapper body that is used as an auxiliary connection and allows up to 500 GPM to supplement the system water supply for fire protection. The swing clapper provides unobstructed waterway and the exposed design is an economical method of satisfying fire department inlet requirements. The package includes the IE33S body, two brass plugs and chains and a brass round escutcheon plate. Specify regional hose thread for outlet.

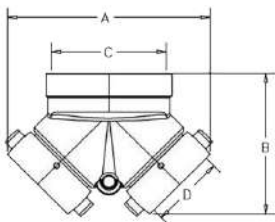
**FINISH:** Cast Brass

**OPTIONS:** Polish Brass, Cast Chrome or Polish Chrome

**HOSE THREADS AVAILABLE:** CSA, BCT, WCT, QST, NSST, NPSH, NST, Louisville, Cleveland, Chicago, Pittsburgh, New Cincinnati, New York Corp., New York Fire Department, Richmond and Raleigh. Other threads see factory for availability.



Dimensions:



- A= 8.25" (209.55mm)
- B= 5.63" (142.95mm)
- C= 4" NPT
- D= Subject to hose thread

PROJECT	APPROVAL STAMP
PROJECT:	<input type="checkbox"/> APPROVED
ADDRESS:	<input type="checkbox"/> APPROVED AS NOTED
ENGINEER:	<input type="checkbox"/> NOT APPROVED
SUBMITTAL DATA:	REMARKS:
NOTES 1:	
NOTES 2:	