



[IE33S-425 HPCP]

4"x2.5"X2.5" Polish chrome straight body exposed fire department connection



4" (100mm) NPT x 2.5" (65mm) hose thread x 2.5" (65mm) hose thread cast brass, chrome finish high polish straight body exposed fire department connection. The IE33S is a UL / ULC Listed and FM Approved swing clapper body that is used as an auxiliary connection and allows up to 500 GPM to supplement the system water supply for fire protection. The swing clapper provides unobstructed waterway and the exposed design is an economical method of satisfying fire department inlet requirements. Specify regional hose thread for outlet.

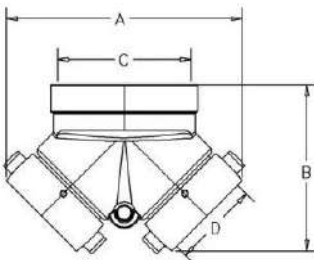
FINISH: Polish Chrome

OPTIONS: Polish Brass, Cast Brass or Cast Chrome

HOSE THREADS AVAILABLE: CSA, BCT, WCT, QST, NSST, NPSH, NST, Louisville, Cleveland, Chicago, Pittsburgh, New Cincinnati, New York Corp., New York Fire Department, Richmond and Raleigh



Dimensions:



A= 8.25" (209.55mm)
B= 5.63" (142.95mm)
C= 4" NPT
D= Subject to hose thread

PROJECT	APPROVAL STAMP
PROJECT:	<input type="checkbox"/> APPROVED
ADDRESS:	<input type="checkbox"/> APPROVED AS NOTED
ENGINEER:	<input type="checkbox"/> NOT APPROVED
SUBMITTAL DATA:	REMARKS:
NOTES 1:	
NOTES 2:	