

[IE28P-CP 2.5]

Polished Chrome Rectangular Plate for Recessed Style F.D.C. with 2-1/2" NPS Holes



INFORMATION:

15" (381mm) x 9" (229mm) chromed brass rectangular plate used to identify and trim recessed fire department connections. Various lettering options are available (see below).

This plate is intended to be used for connections having two (2) 2-1/2" NPS (DN 65) connection points with centers spaced at 7" (177.8 mm).

FINISH:

Polished Chrome

OPTIONS:

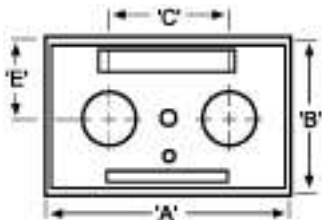
Polished Brass

Stainless Steel Material

LETTERING AVAILABLE:

- Auto Sprinkler
- Standpipe
- Combination
- Auto Sprinkler/Standpipe
- Pump Test
- Wall Hydrant
- Gicleurs Auto
- Borne Murale

Dimensions:



- A:** 15" (381mm)
- B:** 9" (229mm)
- C:** 7" (178mm)
- E =** 4.4" (113mm)

| PROJECT | APPROVAL STAMP |
|-----------------|--|
| PROJECT: | <input type="checkbox"/> APPROVED |
| ADDRESS: | <input type="checkbox"/> APPROVED AS NOTED |
| ENGINEER: | <input type="checkbox"/> NOT APPROVED |
| SUBMITTAL DATA: | REMARKS: |
| NOTES 1: | |
| NOTES 2: | |