



**[ IE28P-CP 2.5 ]**

**Polished Chrome Rectangular Plate for Recessed Style F.D.C. with 2-1/2" NPS Holes**



**INFORMATION:**

15" (381mm) x 9" (229mm) chromed brass rectangular plate used to identify and trim recessed fire department connections. Various lettering options are available (see below).

This plate is intended to be used for connections having two (2) 2-1/2" NPS (DN 65) connection points with centers spaced at 7" (177.8 mm).

**FINISH:**

Polished Chrome

**OPTIONS:**

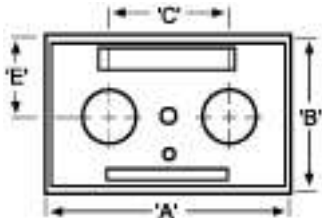
Polished Brass

Stainless Steel Material

**LETTERING AVAILABLE:**

- Auto Sprinkler
- Standpipe
- Combination
- Auto Sprinkler/Standpipe
- Pump Test
- Wall Hydrant
- Gicleurs Auto
- Canalisation d'Incendie
- Borne Murale
- Essai de Pompe
- Gicleurs Auto/Canalisation

**Dimensions:**



- A:** 15" (381mm)
- B:** 9" (229mm)
- C:** 7" (178mm)
- E =** 4.4" (113mm)

PROJECT	APPROVAL STAMP
PROJECT:	<input type="checkbox"/> APPROVED
ADDRESS:	<input type="checkbox"/> APPROVED AS NOTED
ENGINEER:	<input type="checkbox"/> NOT APPROVED
SUBMITTAL DATA:	REMARKS:
NOTES 1:	
NOTES 2:	