

**[ IE28P-BR 2.5 ]**  
**Polished Brass Rectangular Plate for Recessed Style F.D.C. with 2-1/2" NPS Holes**



**INFORMATION:**

15" (381mm) x 9" (229mm) brass rectangular plate used to identify and trim recessed fire department connections. Various lettering options are available (see below).

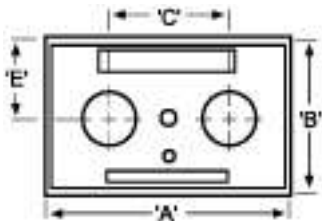
This plate is intended to be used for connections having two (2) 2-1/2" NPS (DN 65) connection points with centers spaced at 7" (177.8 mm).

**FINISH:**  
Polished Brass

**OPTIONS:**  
  
Chrome Plating  
  
Stainless Steel Material

**LETTERING AVAILABLE:**  
Auto Sprinkler  
Standpipe  
Combination Auto Sprinkler/Standpipe  
Pump Test  
Wall Hydrant  
Gicleurs Auto  
Canalisation d'Incendie  
Borne Murale  
Essai de Pompe  
Gicleurs Auto / Canalisation

**Dimensions:**



**A:** 15" (381mm)  
**B:** 9" (229mm)  
**C:** 7" (178mm)  
**E:** 4-11/25" (113mm)

PROJECT	APPROVAL STAMP
PROJECT:	<input type="checkbox"/> APPROVED
ADDRESS:	<input type="checkbox"/> APPROVED AS NOTED
ENGINEER:	<input type="checkbox"/> NOT APPROVED
SUBMITTAL DATA:	REMARKS:
NOTES 1:	
NOTES 2:	