

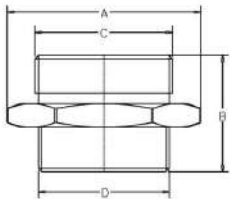
[HF55 CP HOSExHOSE]
2 1/2" M Hose Thread x M Hose Thread Chrome Adapter

Hexagon cast brass, chrome finish hose nipple, 2.5" (65mm) male regional hose thread x 2.5" (65mm) male regional hose thread. Specify regional hose thread.

Finish : Chrome
Optional Finish : Brass

HOSE THREADS AVAILABLE: CSA and NST

Dimensions:



A= 3.75" (95.32mm)
B= 2.46" (62.38mm)
C= Subject to Hose Thread
D= Subject to Hose Thread

PROJECT	APPROVAL STAMP
PROJECT:	<input type="checkbox"/> APPROVED
ADDRESS:	<input type="checkbox"/> APPROVED AS NOTED
ENGINEER:	<input type="checkbox"/> NOT APPROVED
SUBMITTAL DATA:	REMARKS:
NOTES 1:	
NOTES 2:	