



[HF55 BR 2"]
2" M NPT x 2-1/2" M Hose Thread Brass Adapter

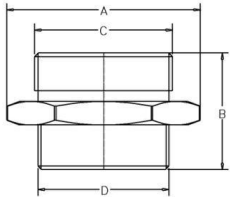


Hexagon cast brass hose nipple, 2.5" (65mm) male regional hose thread x 2" (51mm) male NPT. Specify regional hose thread.

Finish : Cast brass
Optional Finish : Chrome

HOSE THREADS AVAILABLE: CSA and NST

Dimensions:



A= 3.75" (95.32mm)
B= 2.46" (62.38mm)
C= 2.88" (73.04mm)
D= Subject to Hose Thread