

[HF42CP-1.5R/L]
1.5" Chrome Cap & Chain



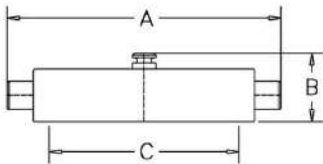
1.5" (DN 40) threaded brass, polished chrome cap & chain for protection of male outlet threads on valves and hydrants. Also, prevents entry of foreign material. Specify regional hose thread.

FINISH: Polished Chrome

OPTIONS: Polished or Cast Brass

HOSE THREADS AVAILABLE: NPSH, NST and New York Fire Department

Dimensions:



A= 2.89" (73.50mm)
B= 1.12" (28.37mm)

PROJECT	APPROVAL STAMP
PROJECT:	<input type="checkbox"/> APPROVED
ADDRESS:	<input type="checkbox"/> APPROVED AS NOTED
ENGINEER:	<input type="checkbox"/> NOT APPROVED
SUBMITTAL DATA:	REMARKS:
NOTES 1:	
NOTES 2:	