



**WILSON & COUSINS**  
INTERIOR FIRE PROTECTION

4390 PALETTA COURT, UNIT M, BURLINGTON, ONTARIO, CANADA L7L 5R2  
1 800 270 6792 | FAX: (905) 637 8655 | info@wilsonandcousins.com

**[ HF40 CAST BR ]**  
**2 1/2" Hose Thread Swivel Cast Brass**



Regional hose thread replacement swivel for open snoot and swivel bases (i.e. "HF58" or "HF57S") and exposed fire department connections.

**Size :** 2 1/2"

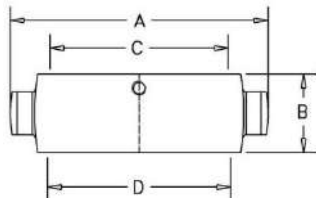
**Finish :** Cast Brass

**Optional Finish :** Polished Chrome, Cast Chrome or Polish Brass

**HOSE THREADS AVAILABLE:** CSA, BCT, WCT, QST, NSST, NPSH, NST, Louisville, Cleveland, Chicago, Pittsburgh, New Cincinnati, New York Corp., New York Fire Department, Richmond and Raleigh

**OTHER THREADS:** Please contact factory

**Dimensions:**



A= 4.67" (118.54mm)

B= 1.47" (37.26mm)

PROJECT	APPROVAL STAMP
PROJECT:	<input type="checkbox"/> APPROVED
ADDRESS:	<input type="checkbox"/> APPROVED AS NOTED
ENGINEER:	<input type="checkbox"/> NOT APPROVED
SUBMITTAL DATA:	REMARKS:
NOTES 1:	
NOTES 2:	