

[HF40 BR]
2 1/2" Hose Thread Swivel Polish Brass



Regional hose thread replacement swivel for open snoot and swivel bases (i.e. "HF58" or "HF57S") and exposed fire department connections.

Size : 2 1/2"

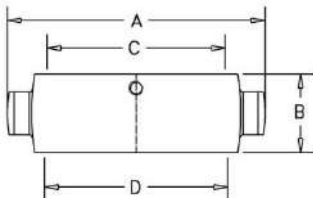
Finish : Polished Brass

Optional Finish : Polished Chrome, Cast Chrome or Cast Brass

HOSE THREADS AVAILABLE: CSA, BCT, WCT, QST, NSST, NPSH, NST, Louisville, Cleveland, Chicago, Pittsburgh, New Cincinnati, New York Corp., New York Fire Department, Richmond and Raleigh

OTHER THREADS: Please contact factory

Dimensions:



A= 4.67" (118.54mm)

B= 1.47" (37.26mm)

PROJECT	APPROVAL STAMP
PROJECT:	<input type="checkbox"/> APPROVED
ADDRESS:	<input type="checkbox"/> APPROVED AS NOTED
ENGINEER:	<input type="checkbox"/> NOT APPROVED
SUBMITTAL DATA:	REMARKS:
NOTES 1:	
NOTES 2:	