



[HF40-3 CP]
3" Hose Thread Swivel Polish Chrome



Regional hose thread replacement swivel for open snoot and swivel bases (i.e. "HF58") and exposed fire department connections.

Size : 3"

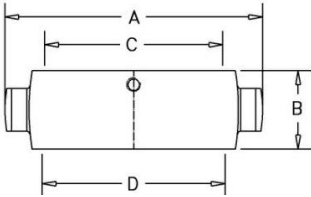
Finish : Polished Chrome

Optional Finish : Polished Brass, Cast Brass or Cast Chrome

HOSE THREADS AVAILABLE: NST and New York Fire Department

OTHER THREADS: Please contact factory

Dimensions:



A= 5.03" (127.80mm)

B= 1.465" (37.20mm)