



[HF36-HOSEx1.00"-CP]
2.50" Female Hose x 1.00" Male Chrome Thread Reducer



Forged brass chrome finish reducing adapter that changes the size and/or thread configuration. The female thread is larger than the male thread and will come with either pin lug or rocker lug.

SIZING: 2-1/2" (65 mm) x 1" (25 mm)

FINISH: Chrome

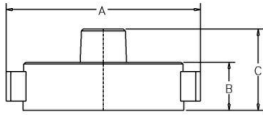
OPTIONS: Brass

STOCKING CONFIGURATION:

- HF36 CSA x NPT
- HF36 NST x NPT
- HF36 NYFD x NPT

OTHER CONFIGURATIONS: Please see factory for availability

Dimensions:



A: 4.33" (110 mm)
B: 1.02" (26 mm)
C: 1.82" (46 mm)