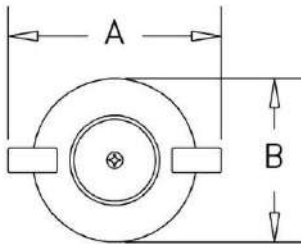


**[ HF-45EBM ]**  
**2.5" Red quick plug (cast) with eye bolts**



2.5" (65mm) inexpensive red cast protective plug for swivel connections. The quick plug has breakable ears, where two eye bolts and nuts are for attachment to female pin or rocker lug swivel. The quick plug prevents entry of foreign materials and can be easily removed with a fire department spanner wrench.

**Dimensions:**



A= 4.7" (119mm)  
B= 3.65" (93mm)

PROJECT	APPROVAL STAMP
PROJECT:	<input type="checkbox"/> APPROVED
ADDRESS:	<input type="checkbox"/> APPROVED AS NOTED
ENGINEER:	<input type="checkbox"/> NOT APPROVED
SUBMITTAL DATA:	REMARKS:
NOTES 1:	
NOTES 2:	